



Panel Discussion: "Does the Slovak labour market need more immigrants?"

Barbara Kauffmann

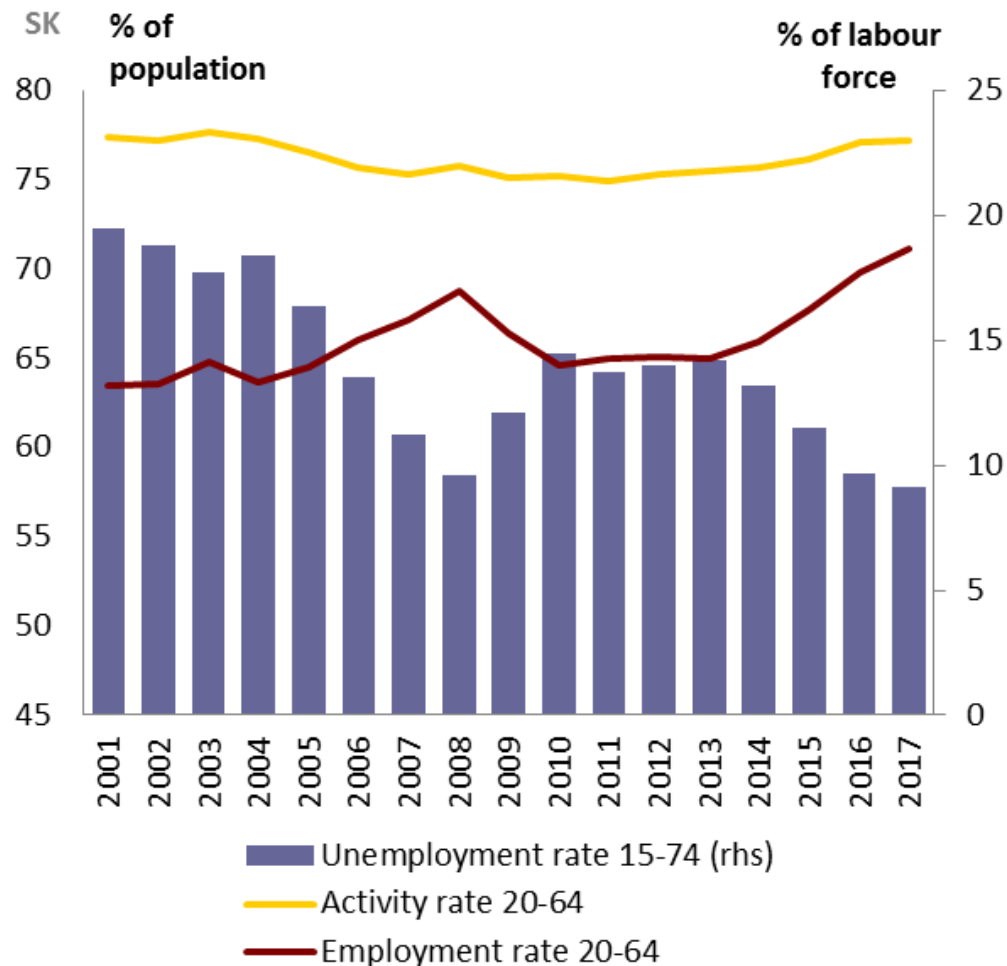
Director of Employment and Social Governance

European Commission,

DG Employment and Social Affairs

Bratislava, 27 April 2018

Improving labour market indicators

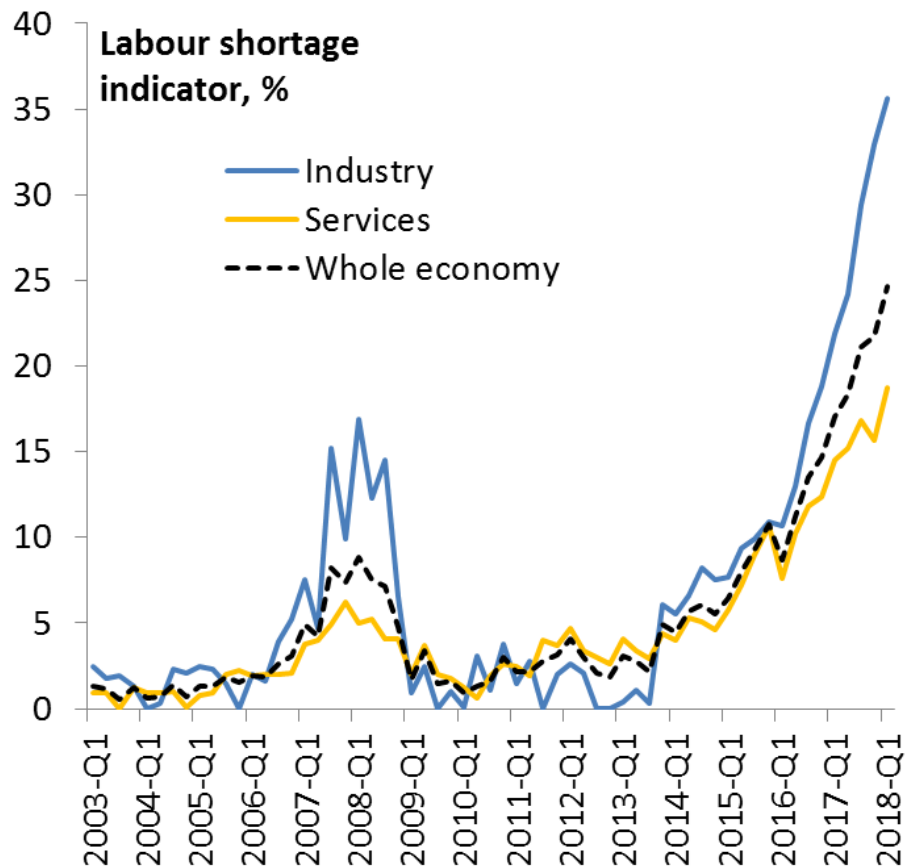


**Activity,
employment and
unemployment rates**

Age group: 20-64,
except unemployment
rate (total)

Source: Eurostat

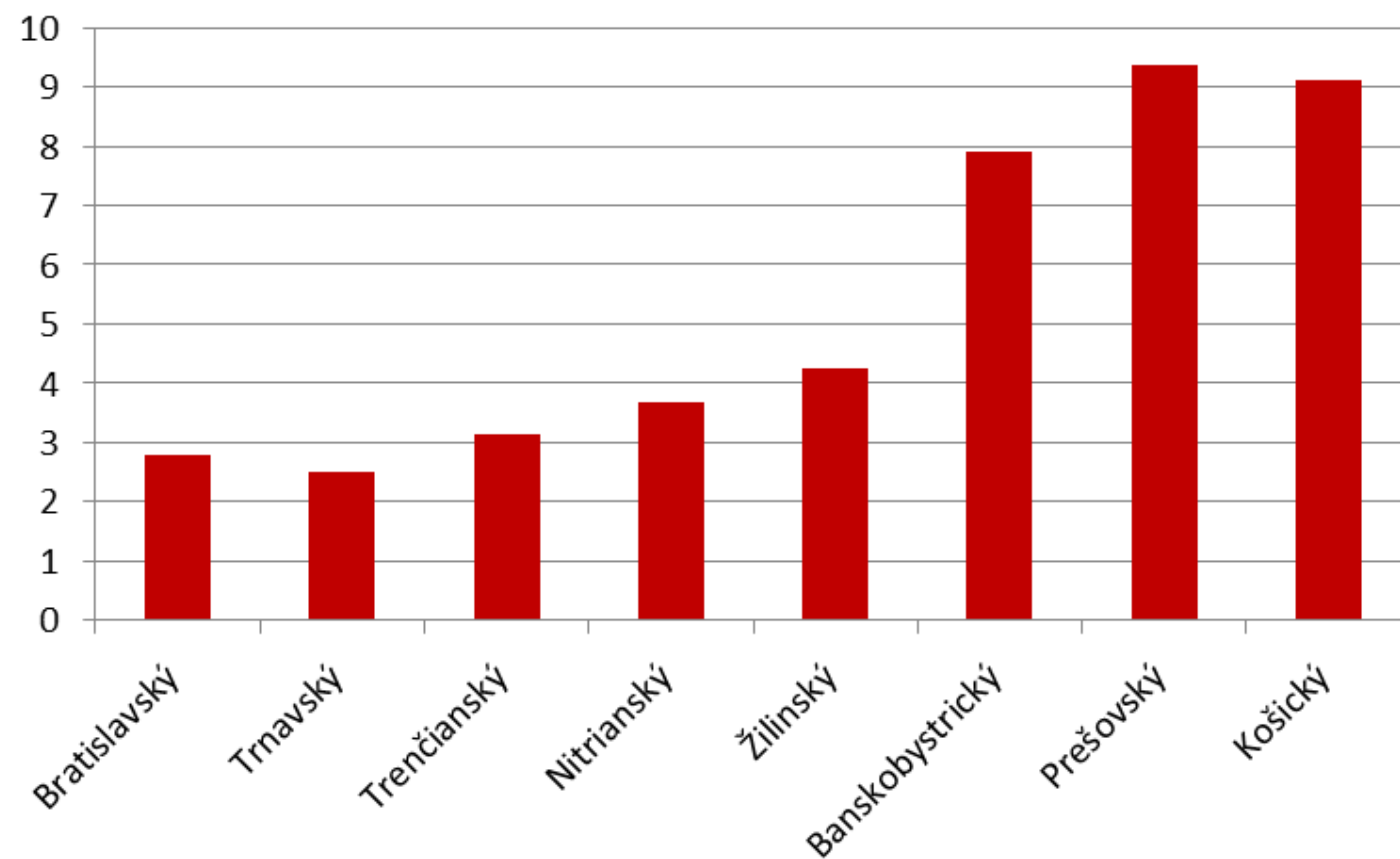
Increasing indications of labour shortages



Percentage of employers reporting that labour is a "factor limiting production", industry

Source: European Business Survey

Regional disparities remain large



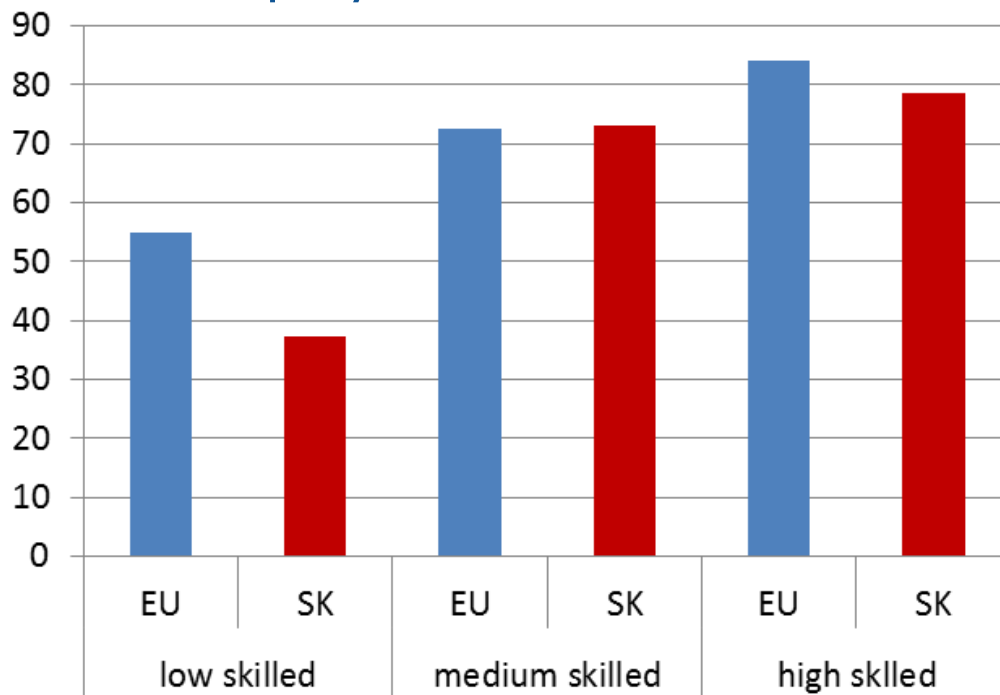
**Registered
unemployment**

March 2018

Source: National
data

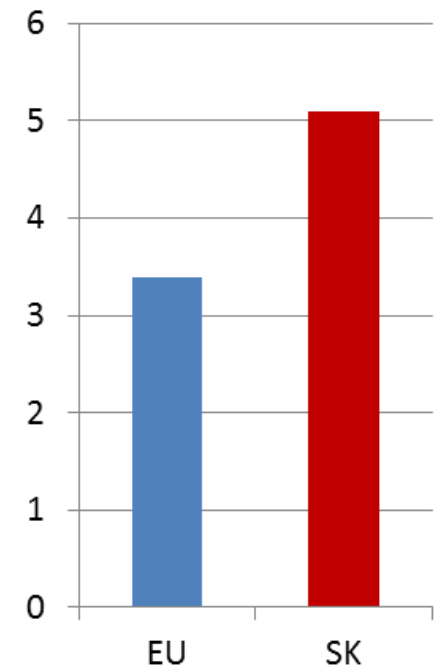
Employment rate of Low-skilled is among the lowest in the EU and long-term unemployment remains high

Employment rates



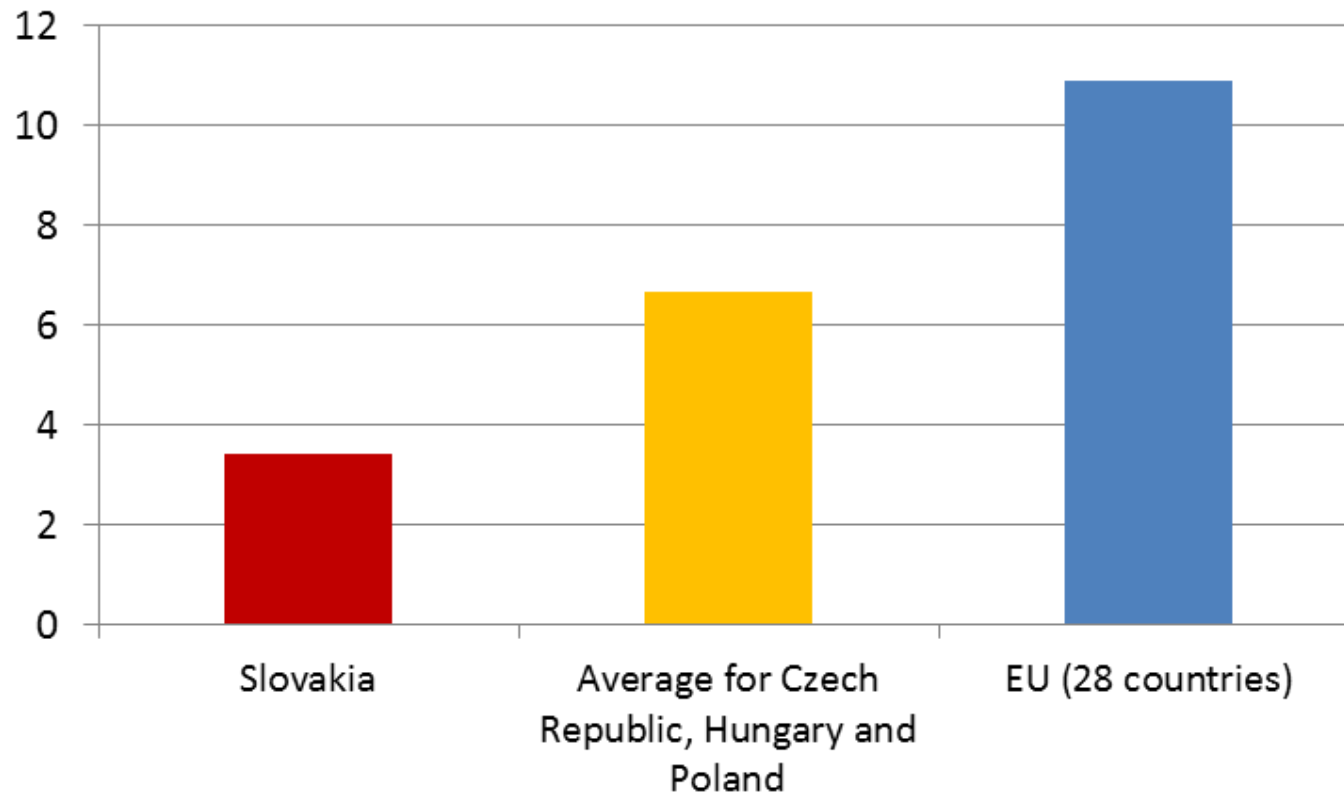
Age group: 20-64; 2017

Long-term unemployment



Age group: 15-74; 2017

Adult participation in learning



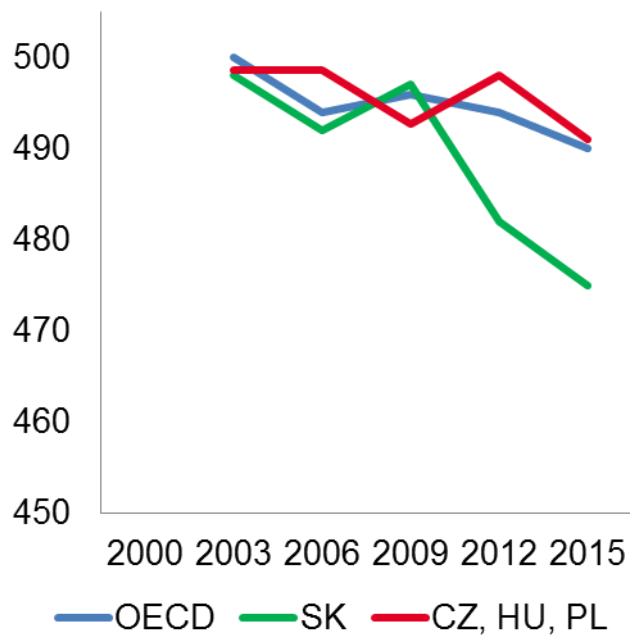
Age group:
25-64

2017

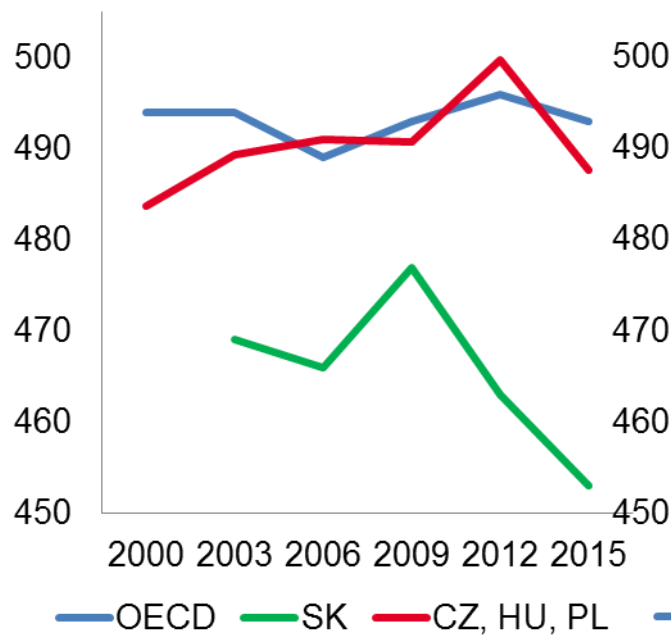
Source:
Eurostat

PISA scores are low and deteriorating

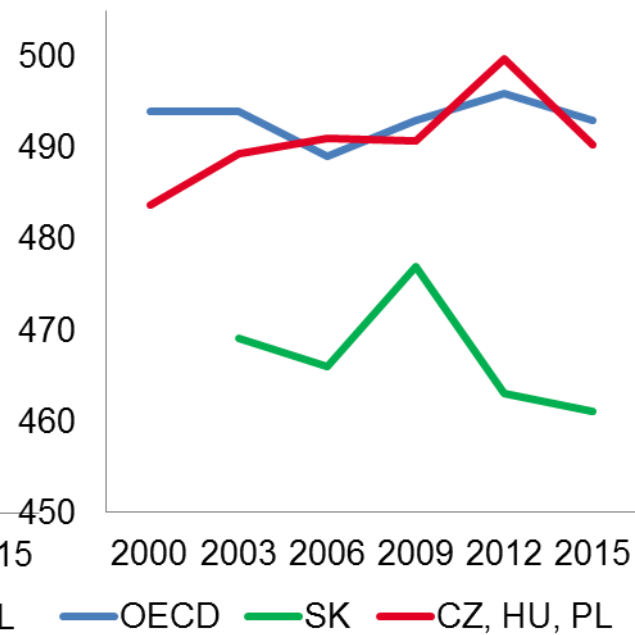
Mathematics



Reading



Science



Source: OECD

Thank you!

Social scoreboard for Slovakia

SLOVAKIA		
Equal opportunities and access to the labour market	Early leavers from education and training (% of population aged 18-24)	On average
	Gender employment gap	To watch
	Income quintile ratio (S80/S20)	Best performers
	At risk of poverty or social exclusion (in %)	Better than average
	Youth NEET (% of total population aged 15-24)	On average
Dynamic labour markets and fair working conditions	Employment rate (% population aged 20-64)	Better than average
	Unemployment rate (% population aged 15-74)	Better than average
	GDHI per capita growth	On average
Social protection and inclusion	Impact of social transfers (other than pensions) on poverty reduction	To watch
	Children aged less than 3 years in formal childcare	Critical situation
	Self-reported unmet need for medical care	On average
	Individuals' level of digital skills	On average

- Methodology used in the JER looks jointly at the levels and changes of each indicator
- Classification in seven categories from "best performers" to "critical situations"

Links to main documents

Country Report (available in English and Slovak):

https://ec.europa.eu/info/publications/2018-european-semester-country-reports_en

European Semester:

https://ec.europa.eu/info/business-economy-euro/economic-and-fiscal-policy-coordination/eu-economic-governance-monitoring-prevention-correction/european-semester_en

European Pillar of Social Rights

https://ec.europa.eu/commission/priorities/deeper-and-fairer-economic-and-monetary-union/european-pillar-social-rights_en